


# RNAV (GPS) RWY 22

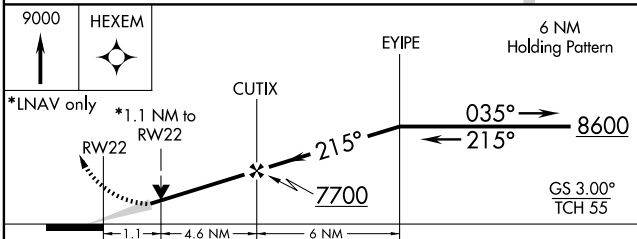
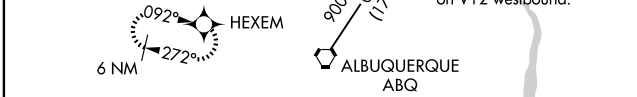
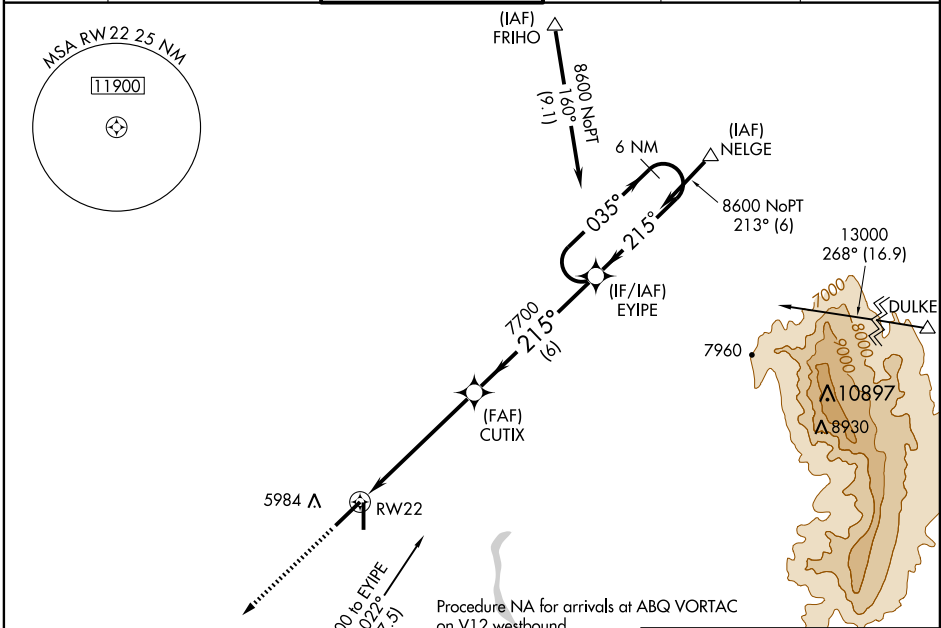
ALBUQUERQUE/DOUBLE EAGLE II (A/E/G)

APP CRS <b>215°</b>	Rwy Idg <b>7398</b>
	TDZE <b>5817</b>
	Apt Elev <b>5837</b>

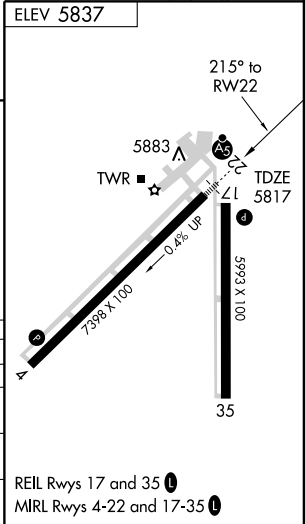
**▼** Baro-VNAV NA below -26°C (-15°F).  
**▲ NA** DME/DME RNP-0.3 NA.  
**W** For inoperative MALSR, increase LNAV Cat. D visibility to 1¼ and LNAV/VNAV Cat D to 1.

**MALSR**  
  
**MISSED APPROACH:** Climb to 9000 direct HEXEM WP and hold.

AWOS-3 <b>119.025</b>	ALBUQUERQUE APP CON <b>127.4 253.5</b>	DOUBLE EAGLE II TOWER * <b>121.625</b>	GND CON <b>120.15</b>	ALBUQUERQUE CLNC DEL <b>124.8</b>	UNICOM <b>122.8 (CTAF)</b>
--------------------------	---	---	--------------------------	--------------------------------------	-------------------------------



CATEGORY	A	B	C	D
GLS PA DA	NA			
LNAV/VNAV DA	6140-½ 323 (400-½)		6140-¾ 323 (400-¾)	
LNAV MDA	6200-½ 383 (400-½)		6200-1 383 (400-1)	
CIRCLING	6400-1 563 (600-1)	6400-1½ 563 (600-1½)		6400-2 563 (600-2)



SW-1, 09 APR 2009 to 07 MAY 2009

SW-1, 09 APR 2009 to 07 MAY 2009