

CALDWELL, IDAHO

AL-6806 (FAA)

# RNAV (GPS) RWY 30

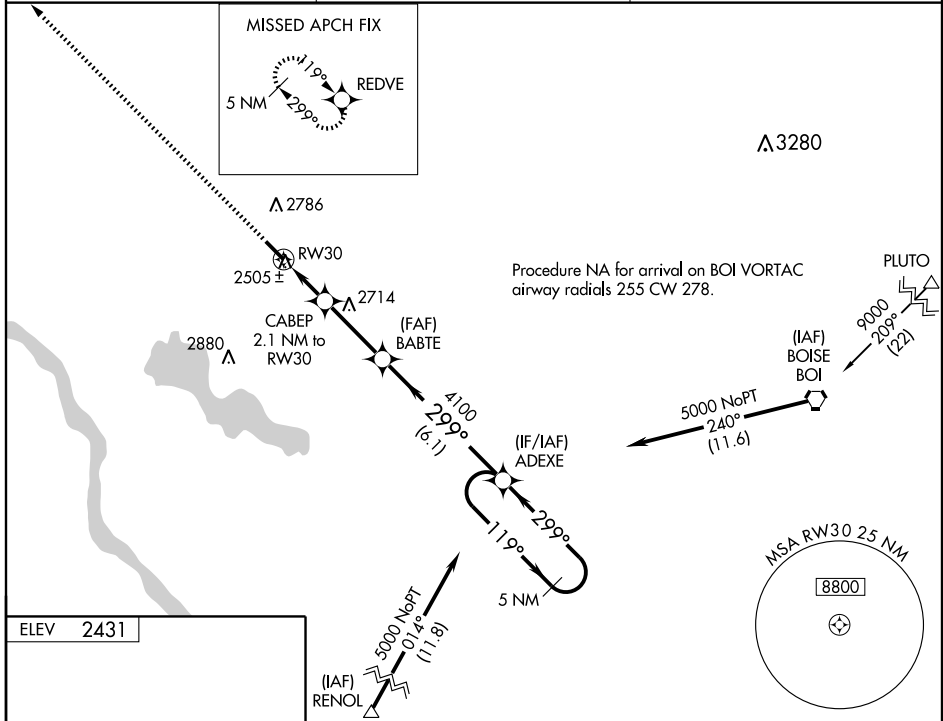
CALDWELL INDUSTRIAL (EUL)

WAAS CH <b>73007</b> <b>W30A</b>	APP CRS <b>299°</b>	Rwy Idg TDZE Apt Elev	<b>5500</b> <b>2432</b> <b>2431</b>
--	------------------------	-----------------------------	---

**⚠** DME/DME RNP-0.3 NA. Visibility reduction by helicopters NA.  
**⚠** Baro-VNAV NA when using Boise altimeter setting. For uncompensated Baro-VNAV systems, LNAV/VNAV NA below -19°C (-2°F) or above 44°C (111°F).  
 When local altimeter setting not received, use Boise altimeter setting and increase all DA/MDA 120 feet and all visibilities ½ mile.

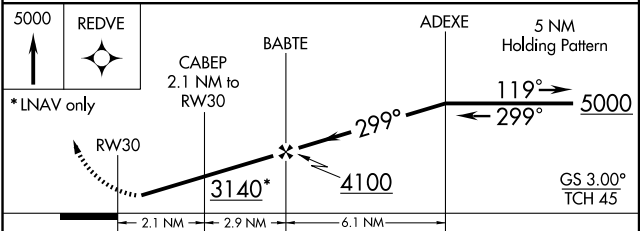
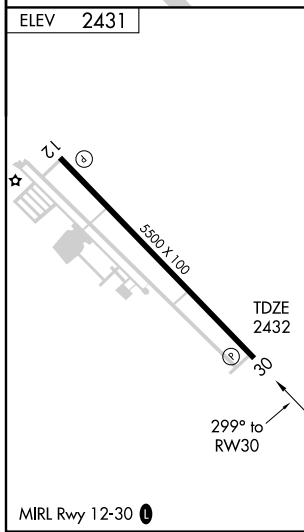
**MISSED APPROACH:** Climb to 5000  
 direct REDVE and hold.

AWOS-3 <b>135.075</b>	BOISE APP CON <b>119.6 269.4</b>	UNICOM <b>122.7 (CTAF) 0</b>
--------------------------	-------------------------------------	---------------------------------



NW-1, 09 APR 2009 to 07 MAY 2009

NW-1, 09 APR 2009 to 07 MAY 2009



CATEGORY	A	B	C	D
LPV DA	2687-1		255 (300-1)	
LNAV/VNAV DA	2766-1½		334 (400-1½)	
LNAV MDA	2880-1	448 (500-1)	2880-1½ 448 (500-1½)	2880-1½ 448 (500-1½)
CIRCLING	3100-1	669 (700-1)	3100-1¾ 669 (700-1¾)	3100-2 669 (700-2)

CALDWELL, IDAHO  
 Amdt 1 09071

43°39'N - 116°38'W

# RNAV (GPS) RWY 30