

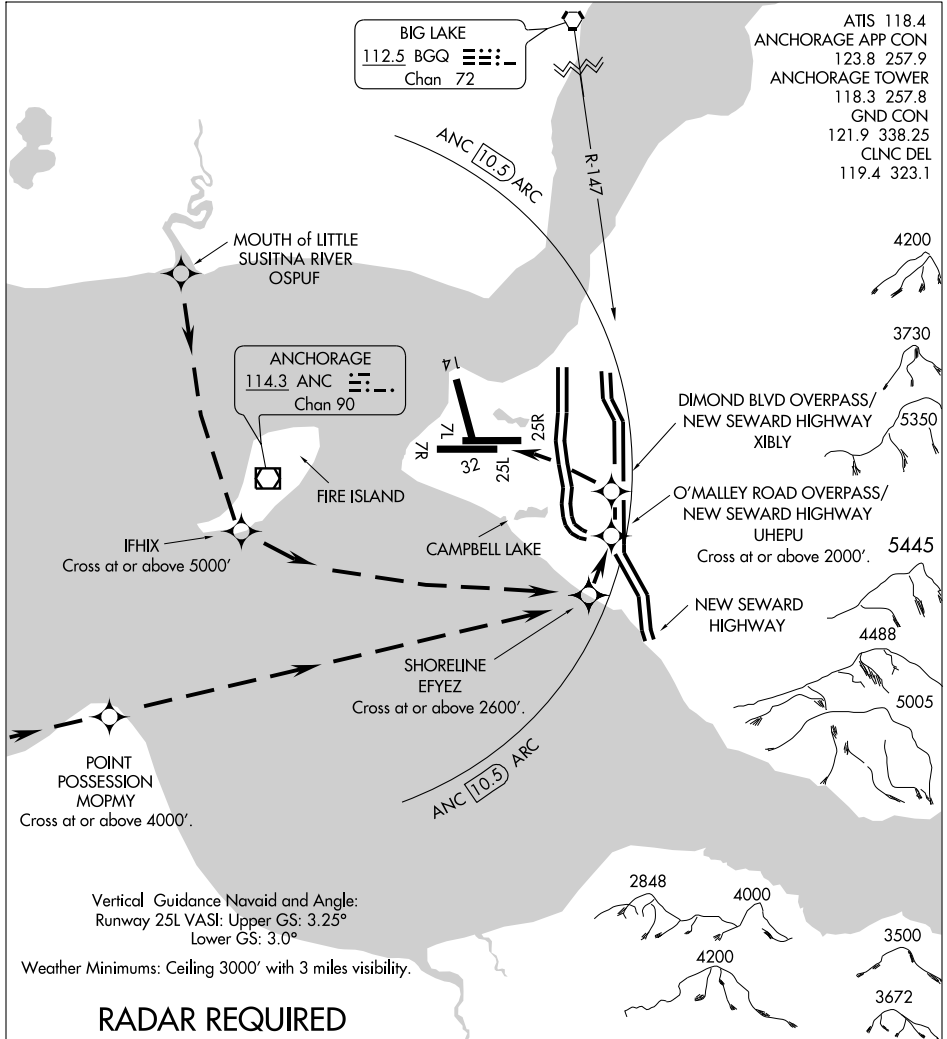
# SEWARD VISUAL RWY 25L

AL-1500 (FAA)

ANCHORAGE, ALASKA

AK, 12 MAR 2009 to 07 MAY 2009

AK, 12 MAR 2009 to 07 MAY 2009



ATIS 118.4  
 ANCHORAGE APP CON 123.8 257.9  
 ANCHORAGE TOWER 118.3 257.8  
 GND CON 121.9 338.25  
 CLNC DEL 119.4 323.1

**ANCHORAGE**  
 114.3 ANC  
 Chan 90

**BIG LAKE**  
 112.5 BQG  
 Chan 72

Vertical Guidance Navaid and Angle:  
 Runway 25L VASI: Upper GS: 3.25°  
 Lower GS: 3.0°

Weather Minimums: Ceiling 3000' with 3 miles visibility.

## RADAR REQUIRED

NM	1	2	3	4	5	6	7	8	9	10	11	12	13	14	15	16	17	18	19	20	21	22	23	24	25	26
----	---	---	---	---	---	---	---	---	---	----	----	----	----	----	----	----	----	----	----	----	----	----	----	----	----	----

### SEWARD VISUAL RWY 25L

PROCEDURE NOT AUTHORIZED AT NIGHT

# SEWARD VISUAL RWY 25L

61° 10' N-150° 00' W

ANCHORAGE, ALASKA