

# TETERBORO FIVE DEPARTURE

ATIS 132.025 114.2  
TETERBORO CLNC DEL  
128.05  
TETERBORO GND CON  
121.9  
TETERBORO TOWER  
119.5  
NEW YORK DEP CON  
126.7 379.9

HUGUENOT  
116.1 HUO   
Chan 108  
N41°24.58'  
W74°35.50'  
L-33-34,  
H-10-12

KINGSTON  
117.6 IGN   
Chan 123  
N41°39.93'  
W73°49.33'  
L-33-34, H-10-12

CARMEL  
116.6 CMK   
Chan 113  
N41°16.80'  
W73°34.88'  
L-33-34,  
H-10-12

GREKI  
N41°28.80'  
W73°18.85'  
L-33-34, H-10-12

NEION  
N41°13.69'  
W74°34.85'  
L-33-34,  
H-10-12

HAAYS  
N41°19.20'  
W74°28.03'  
L-33-34-28

GAYEL  
N41°24.40'  
W74°21.43'  
L-33-34, H-10-12

BREZY  
N41°09.49'  
W74°08.10'  
L-33-34

MERIT  
N41°22.92'  
W73°08.25'  
L-33-34

BAYYS  
N41°17.35'  
W72°58.28'  
L-33-34

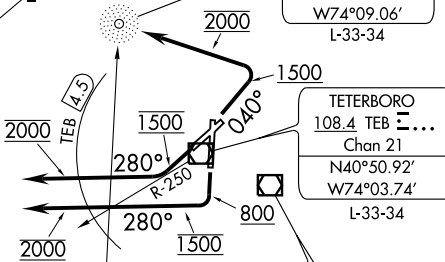
COATE  
N41°08.17'  
W74°41.71'  
L-33-34, H-10-12

SPARTA  
115.7 SAX   
Chan 104  
N41°04.05'  
W74°32.30'  
L-33-34, H-10-12

PATTERSON  
34Z PNJ   
N40°56.47'  
W74°09.06'  
L-33-34

BRIDGEPORT  
108.8 BDR   
Chan 25  
N41°09.64'  
W73°07.47'  
L-33-34, H-10-12

ELIOT  
N40°49.11'  
W75°07.80'  
L-33-34,  
H-10-12



PARKE  
N40°40.99'  
W75°04.59'  
L-33-34,  
H-10-12

BROADWAY  
114.2 BWZ   
Chan 89  
N40°47.91'  
W74°49.31'  
L-33-34, H-10-12

LA GUARDIA  
113.1 LGA   
Chan 78  
N40°47.03'  
W73°52.11'  
L-33-34, H-10-12

DEER PARK  
117.7 DPK   
Chan 124  
N40°47.51'  
W73°18.22'  
L-33-34, H-10-12

LANNA  
N40°33.58'  
W75°01.66'  
L-33-34, H-10-12

SOLBERG  
112.9 SBJ   
Chan 76  
N40°34.98'  
W74°44.51'  
L-33-34, H-10-12

COLTS NECK  
115.4 COL   
Chan 101  
N40°18.70'  
W74°09.59'  
L-34, H-10-12

KENNEDY  
115.9 JFK   
Chan 106  
N40°37.97'  
W73°46.28'  
L-33-34, H-10-12

BIGGY  
N40°25.18'  
W74°58.36'  
L-33-34, H-10-12

WHITE  
N40°00.41'  
W74°15.08'  
L-34, H-10-12

DIXIE  
N40°05.93'  
W74°09.78'  
L-34

WAVEY  
N40°14.08'  
W73°23.66'  
L-34

NE-2, 09 APR 2009 to 07 MAY 2009

NE-2, 09 APR 2009 to 07 MAY 2009

# TETERBORO FIVE DEPARTURE