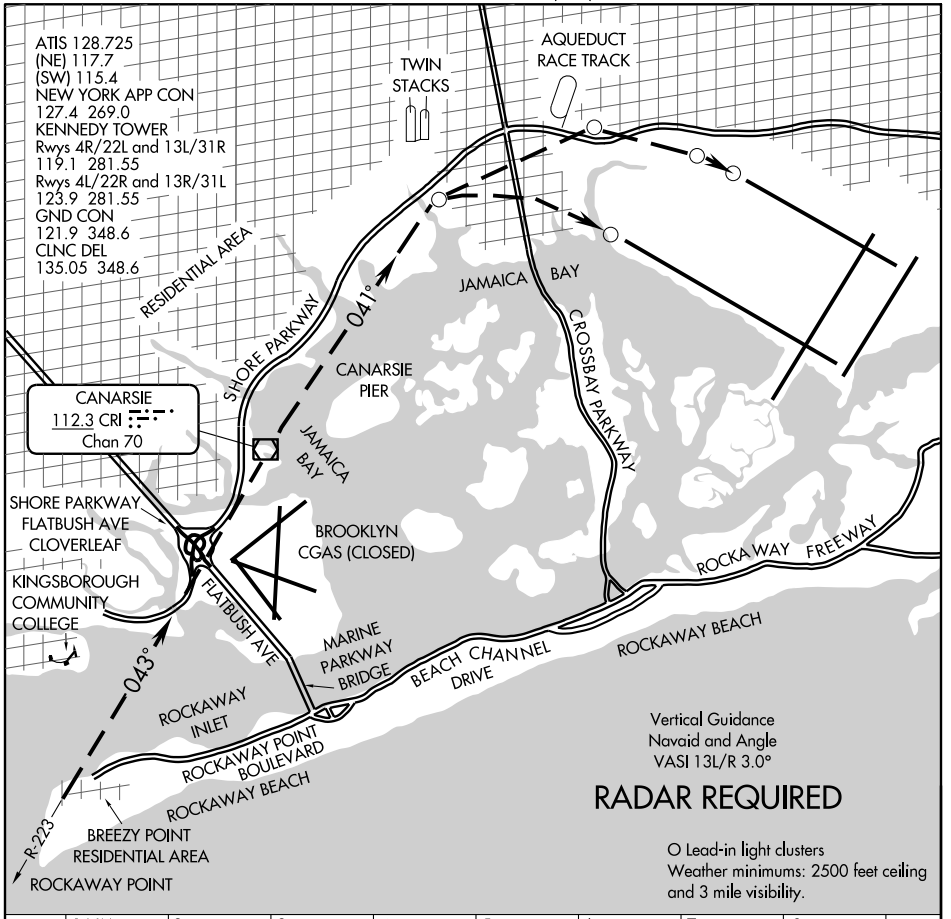


PARKWAY VISUAL RWY 13L/R



NE-2, 09 APR 2009 to 07 MAY 2009

NE-2, 09 APR 2009 to 07 MAY 2009

1 NM	2	3	4	5	6	7	8
------	---	---	---	---	---	---	---

PARKWAY VISUAL RUNWAY 13L/R

When cleared for Parkway Visual to Runway 13L/R maintain at or above 2000' until abeam Rockaway Point. Remain west of Rockaway Point, thence east of Kingsborough Community College. Remain east of the Shore Parkway. Cross Brooklyn Coast Guard Air Station at or above 1500'. Remain east of the Shore Parkway until Canarsie Pier.

Runway 13R continue descent between the Canarsie Pier and Twin Stacks.
Runway 13L continue descent after passing the Twin Stacks.

PARKWAY VISUAL RWY 13L/R