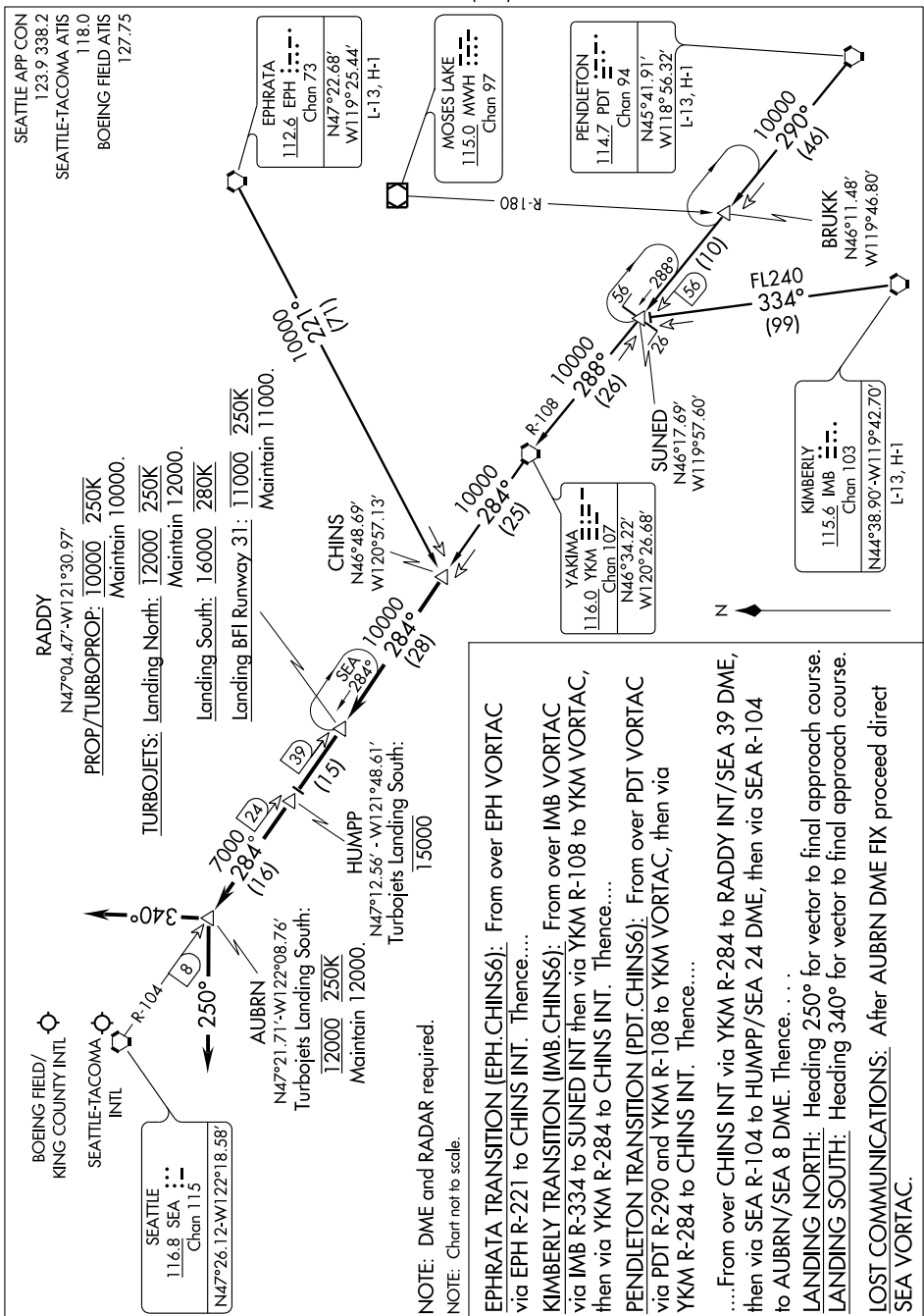


# CHINS SIX ARRIVAL

ST-582 (FAA)

SEATTLE, WASHINGTON

NW-1, 09 APR 2009 to 07 MAY 2009



**EPHRATA TRANSITION (EPH.CHINS6):** From over EPH VORTAC via EPH R-221 to CHINS INT. Thence....

**KIMBERLY TRANSITION (IMB.CHINS6):** From over IMB VORTAC via IMB R-334 to SUNED INT then via YKM R-108 to YKM VORTAC, then via YKM R-284 to CHINS INT. Thence....

**PENDLETON TRANSITION (PDT.CHINS6):** From over PDT VORTAC via PDT R-290 and YKM R-108 to YKM VORTAC, then via YKM R-284 to CHINS INT. Thence....

....From over CHINS INT via YKM R-284 to RADDY INT/SEA 39 DME, then via SEA R-104 to HUMPP/SEA 24 DME, then via SEA R-104 to AUBRN/SEA 8 DME. Thence. . . .

**LANDING NORTH:** Heading 250° for vector to final approach course.  
**LANDING SOUTH:** Heading 340° for vector to final approach course.

**LOST COMMUNICATIONS:** After AUBRN DME FIX proceed direct SEA VORTAC.

NW-1, 09 APR 2009 to 07 MAY 2009

# CHINS SIX ARRIVAL

SEATTLE, WASHINGTON