

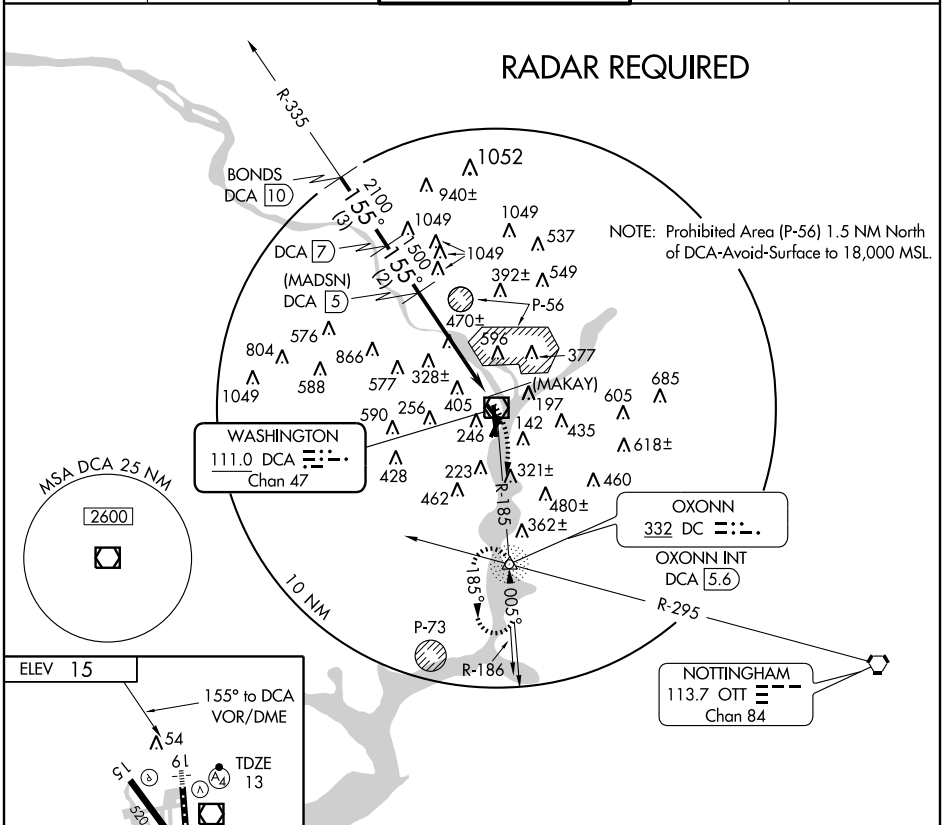
# VOR/DME or GPS RWY 19

VOR/DME DCA <b>111.0</b> Chan <b>47</b>	APP CRS <b>155°</b>	Rwy Ldg <b>6869</b> TDZE <b>13</b> Apt Elev <b>15</b>
---	------------------------	---

WASHINGTON/RONALD REAGAN WASHINGTON NATIONAL (DCA)

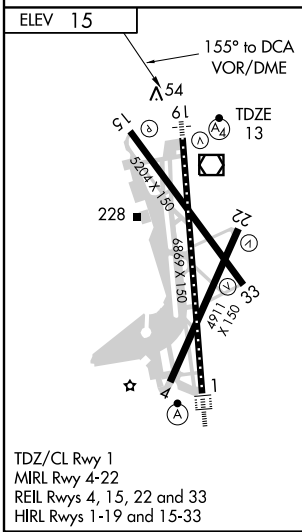
<b>∇</b> Inoperative table does not apply.	<b>⚠</b> Circling Cats C and D not authorized northeast Rwy 15-33.	<b>MALSF</b> 	<b>MISSED APPROACH:</b> Climbing right turn to 1800 via DCA R-185 to OXONN INT/NDB/DCA 5.6 DME and hold.
--	--	------------------	--

ATIS <b>132.65</b>	POTOMAC APP CON <b>124.7 338.2</b>	WASHINGTON TOWER <b>119.1 257.6</b>	GND CON <b>121.7 257.6</b>	CLNC DEL <b>128.25</b>
-----------------------	---------------------------------------	--	-------------------------------	---------------------------



NE-3, 09 APR 2009 to 07 MAY 2009

NE-3, 09 APR 2009 to 07 MAY 2009



WASHINGTON, DC  
Amdt 9B 09071

WASHINGTON/RONALD REAGAN WASHINGTON NATIONAL (DCA)  
38°51' N - 77°02' W  
**VOR/DME or GPS RWY 19**

	BONDS DCA (10)	DCA (7)	(MADSN) DCA (5)	1800 DCA R-185 111.0	DC 332
	3000	2100	1600	(MAKAY) DCA (0.5)	VOR/DME
	3 NM			4.5 NM	
CATEGORY	A	B	C	D	
S-19	980/60 967 (1000-1¼)	980-1½ 967 (1000-1½)	980-3	967 (1000-3)	
CIRCLING	980-1¼ 965 (1000-1¼)	980-1½ 965 (1000-1½)	980-3	965 (1000-3)	