

ROSSLYN LDA RWY 19

LOC/DME I-ASO 109.9 Chan 36	APP CRS 147°	Rwy Idg 6869 TDZE 14 Apt Elev 16
---	------------------------	---

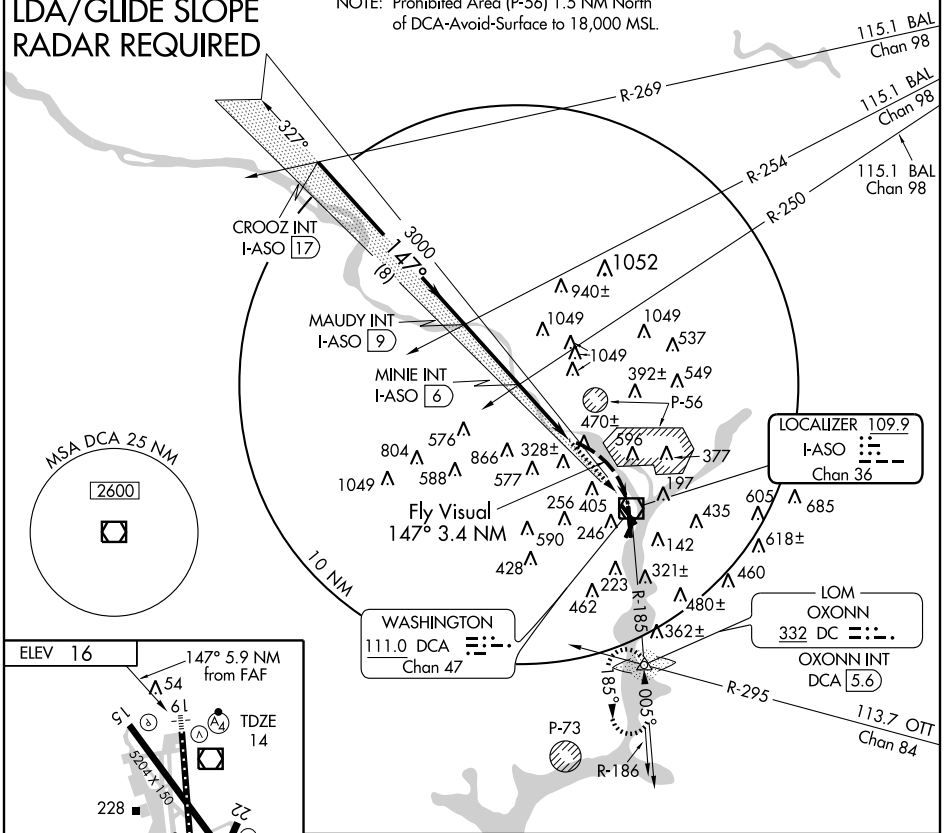
WASHINGTON/RONALD REAGAN WASHINGTON NATIONAL (DCA)

▼ Glide slope provided by standard glide slope equipment. ▲ Inoperative table does not apply. ▲ Circling Cats C and D not authorized northeast Rwy 15-33.	MALSF 	MISSED APPROACH: Climb to 1800 direct DCA VOR/DME and R-185 to OXONN LOM/Int/DCA 5.6 DME and hold.
---	-----------	--

ATIS 132.65	POTOMAC APP CON 124.7 338.2	WASHINGTON TOWER 119.1 257.6	GND CON 121.7 257.6	CLNC DEL 128.25
-----------------------	---------------------------------------	--	-------------------------------	---------------------------

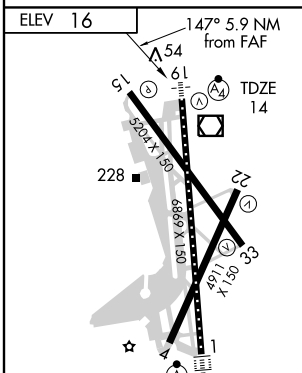
LDA/GLIDE SLOPE RADAR REQUIRED

NOTE: Prohibited Area (P-56) 1.5 NM North of DCA-Avoid-Surface to 18,000 MSL.



NE-3, 09 APR 2009 to 07 MAY 2009

NE-3, 09 APR 2009 to 07 MAY 2009



TDZ/CL Rwy 1
REIL Rwy 4, 15, 22 and 33
HIRL Rwy 1-19 and 15-33
MIRL Rwy 4-22

FAF to MAP 2.5 NM					
Knots	60	90	120	150	180
Min:Sec	2:30	1:40	1:15	1:00	0:50

