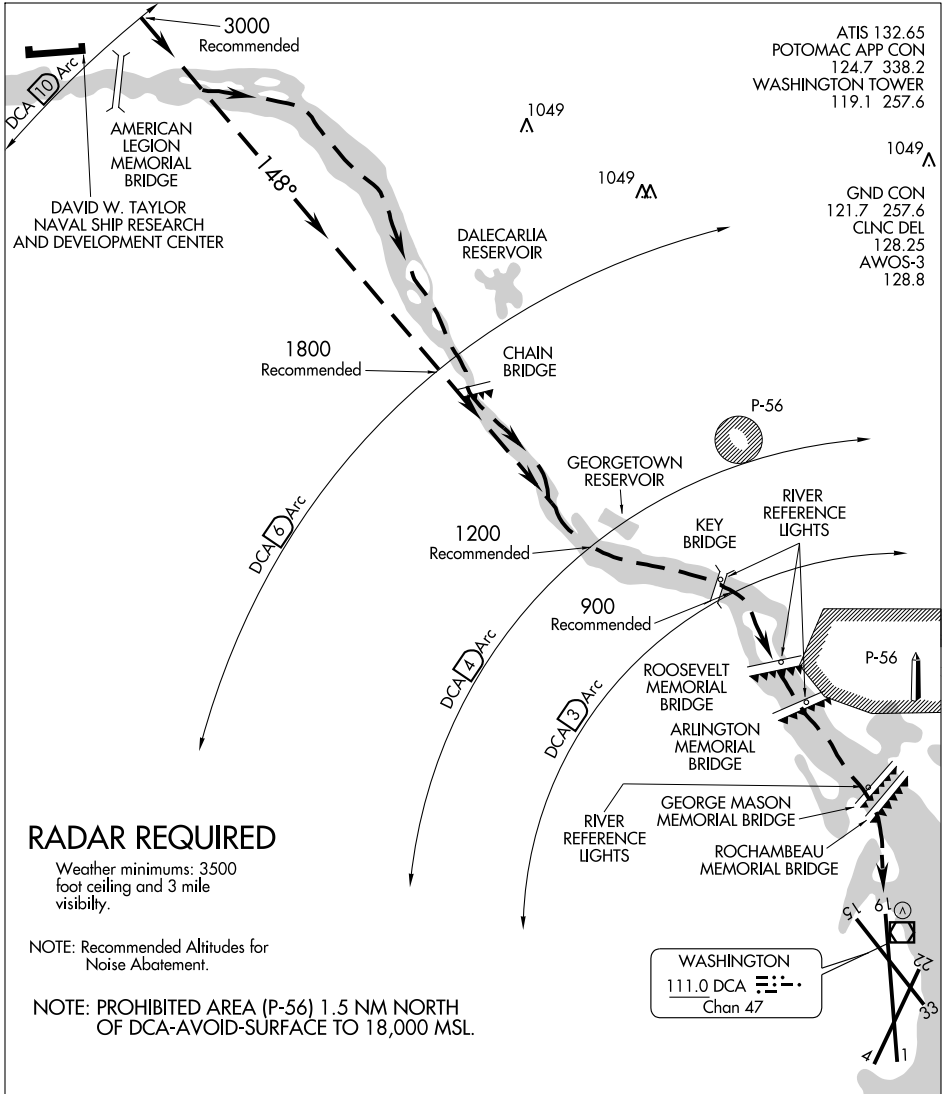


RIVER VISUAL RWY 19

WASHINGTON/ RONALD REAGAN WASHINGTON NATIONAL (DCA)
AL-443 (FAA) WASHINGTON, DC



ATIS 132.65
 POTOMAC APP CON 124.7 338.2
 WASHINGTON TOWER 119.1 257.6

GND CON 121.7 257.6
 CLNC DEL 128.25
 AWOS-3 128.8

RADAR REQUIRED

Weather minimums: 3500 foot ceiling and 3 mile visibility.

NOTE: Recommended Altitudes for Noise Abatement.

NOTE: PROHIBITED AREA (P-56) 1.5 NM NORTH OF DCA-AVOID-SURFACE TO 18,000 MSL.

1 NM	2	3	4	5	6	7
------	---	---	---	---	---	---

RIVER VISUAL RWY 19

Aircraft may visually follow the river to the airport, or may proceed via the DCA VOR/DME R-328 (148° inbound) or via the Rosslyn LDA Rwy 19 Approach to abeam Georgetown Reservoir or the DCA 4 NM DME fix, then follow the river to the airport.

NOTE: Clearance for visual approach does not authorize penetration of P-56.

RIVER VISUAL RWY 19

38°51'N-77°02'W

WASHINGTON, DC

NE-3, 09 APR 2009 to 07 MAY 2009

NE-3, 09 APR 2009 to 07 MAY 2009