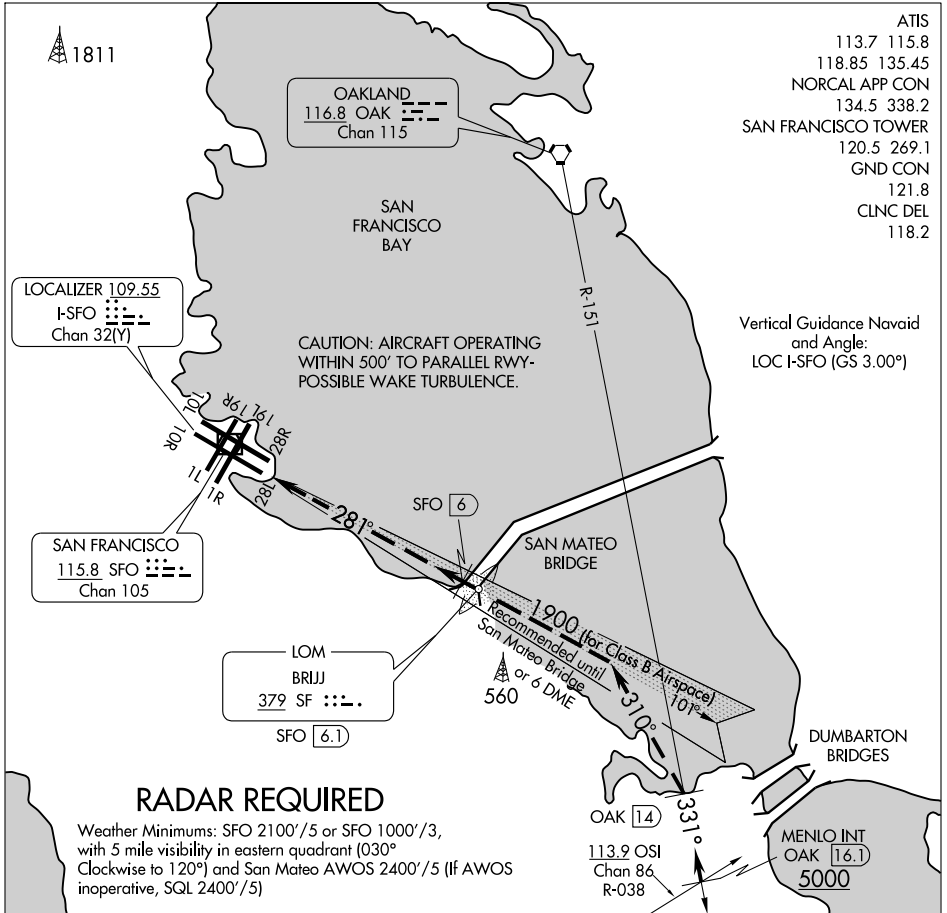


# TIPP TOE VISUAL RWY 28L

AL-375 (FAA)

SAN FRANCISCO INTL (SFO)  
SAN FRANCISCO, CALIFORNIA



ATIS  
113.7 115.8  
118.85 135.45  
NORCAL APP CON  
134.5 338.2  
SAN FRANCISCO TOWER  
120.5 269.1  
GND CON  
121.8  
CLNC DEL  
118.2

Vertical Guidance Navaid  
and Angle:  
LOC I-SFO (GS 3.00°)

SW-2, 09 APR 2009 to 07 MAY 2009

SW-2, 09 APR 2009 to 07 MAY 2009

## TIPP TOE VISUAL APPROACH RUNWAY 28L

When visual approaches to Runway 28L are in progress, arriving aircraft may be cleared for a visual approach via the OAK VOR R-151 and I-SFO localizer.

The OAK VOR and DME and I-SFO must be operating.

Aircraft should cross the OAK R-151/16.1 DME (Menlo Int) at or above 5000 and the San Mateo Bridge at or above 1900.

NOTE: Closely spaced parallel visual approaches may be in progress to Runway 28R utilizing the SFO R-095. In the event of a go-around on Runway 28L, turn left heading 265°, climb and maintain 3000, or as directed by Air Traffic Control.

# TIPP TOE VISUAL RWY 28L