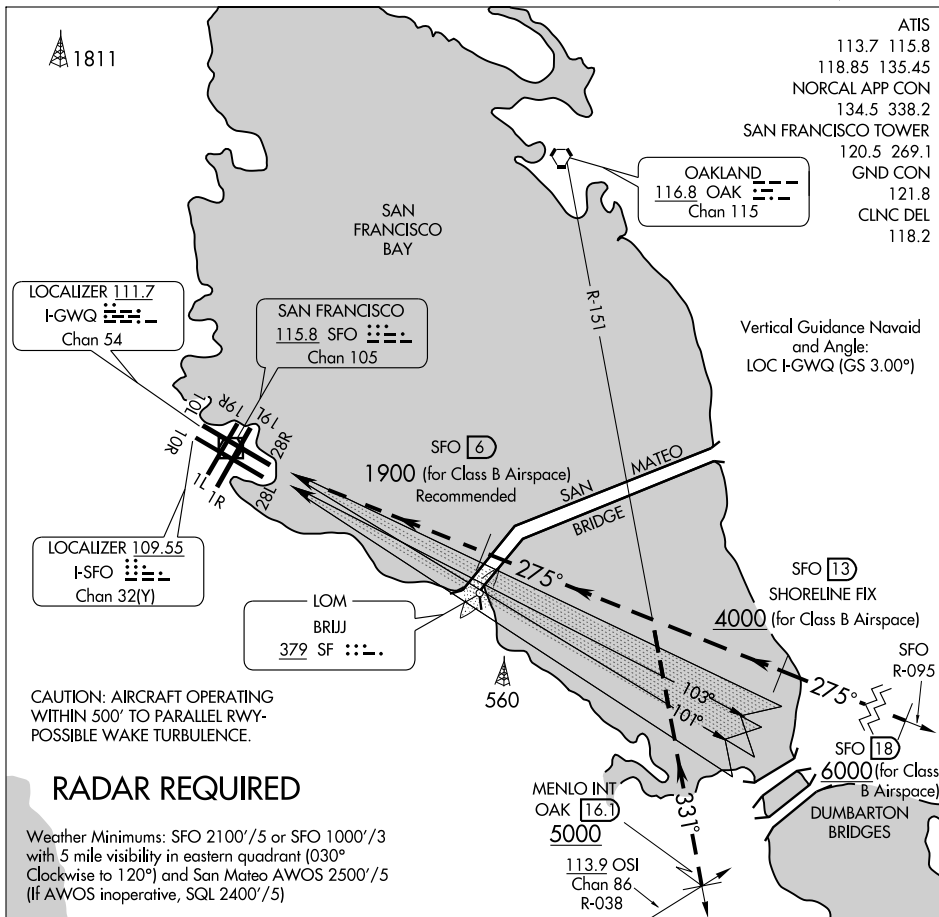


QUIET BRIDGE VISUAL RWYS 28L/R

SAN FRANCISCO INTL (SFO)
SAN FRANCISCO, CALIFORNIA



SW-2, 09 APR 2009 to 07 MAY 2009

SW-2, 09 APR 2009 to 07 MAY 2009

QUIET BRIDGE VISUAL APPROACH RWYS 28L/R

When visual approaches to Runways 28L/R are in progress, arriving aircraft may be vectored into a position for a straight-in visual approach to Runways 28L/R via the SFO VOR R-095.

SFO VOR and DME must be operating.

Aircraft should remain on the SFO R-095 until passing the San Mateo Bridge.

NOTE: Closely spaced parallel visual approaches may be in progress to Runway 28L utilizing I-SFO. In the event of a go-around on Runway 28L, turn left heading 265°, or on Runway 28R, turn right heading 310°, climb and maintain 3000, or as directed by Air Traffic Control.

QUIET BRIDGE VISUAL RWYS 28L/R

SAN FRANCISCO, CALIFORNIA
SAN FRANCISCO INTL (SFO)