

BONVL FIVE ARRIVAL

ST-330 (FAA)

PORTLAND, OREGON

NW-1, 09 APR 2009 to 07 MAY 2009

PORTLAND APP CON
124.35 299.2
PORTLAND INTL ATIS
128.35 269.9
PORTLAND-HILLSBORO ATIS
127.65

BAITILE GROUND
116.6 BTG
Chan 113
N45° 44.87' - W122° 35.49'

COLUMBIA
CBU
Chan 29
N45°35.37'
W122°35.68'

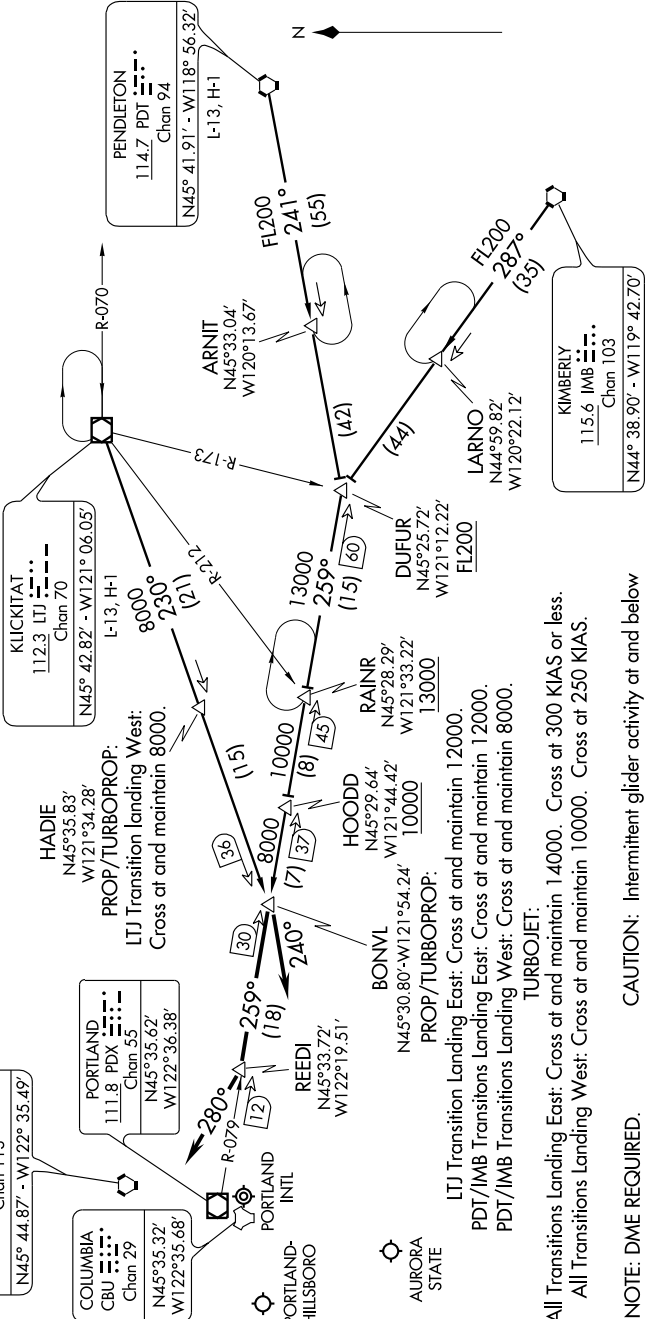
PORTLAND
PDX
Chan 55
N45°35.62'
W122°36.38'

HADIE
N45°35.83'
W121°34.28'
PROP/TURBOPROP:
LTJ Transition landing West:
Cross at and maintain 8000.

KLICKITAT
112.3 LTJ
Chan 70
N45° 42.82' - W121° 06.05'
L-13, H-1

PENDLETON
114.7 PDT
Chan 94
N45° 41.91' - W118° 56.32'
L-13, H-1

KIMBERLY TRANSITION (IMB.BONVL5): From over IMB VORTAC via IMB R-287 to DUFUR, then via PDX R-079 to BONVL, Thence.
KLICKITAT TRANSITION (LTJ.BONVL5): From over LTJ VOR/DME via LTJ R-230 to BONVL. Thence.
PENDLETON TRANSITION (PDT.BONVL5): From over PDT VORTAC via PDT R-241 to DUFUR, then via PDX R-079 to BONVL. Thence.
 From over BONVL:
 Landing East - via the PDX R-079 to REEDI. Depart REEDI heading 280° for radar vectors to final approach course.
 Landing West - depart BONVL heading 240°, for radar vectors to final approach course.



BONVL FIVE ARRIVAL

PORTLAND, OREGON

NOTE: DME REQUIRED.
NOTE: Chart not to scale.

CAUTION: Intermittent glider activity at and below 17500 MSL between RAINR and BONVL.

NW-1, 09 APR 2009 to 07 MAY 2009