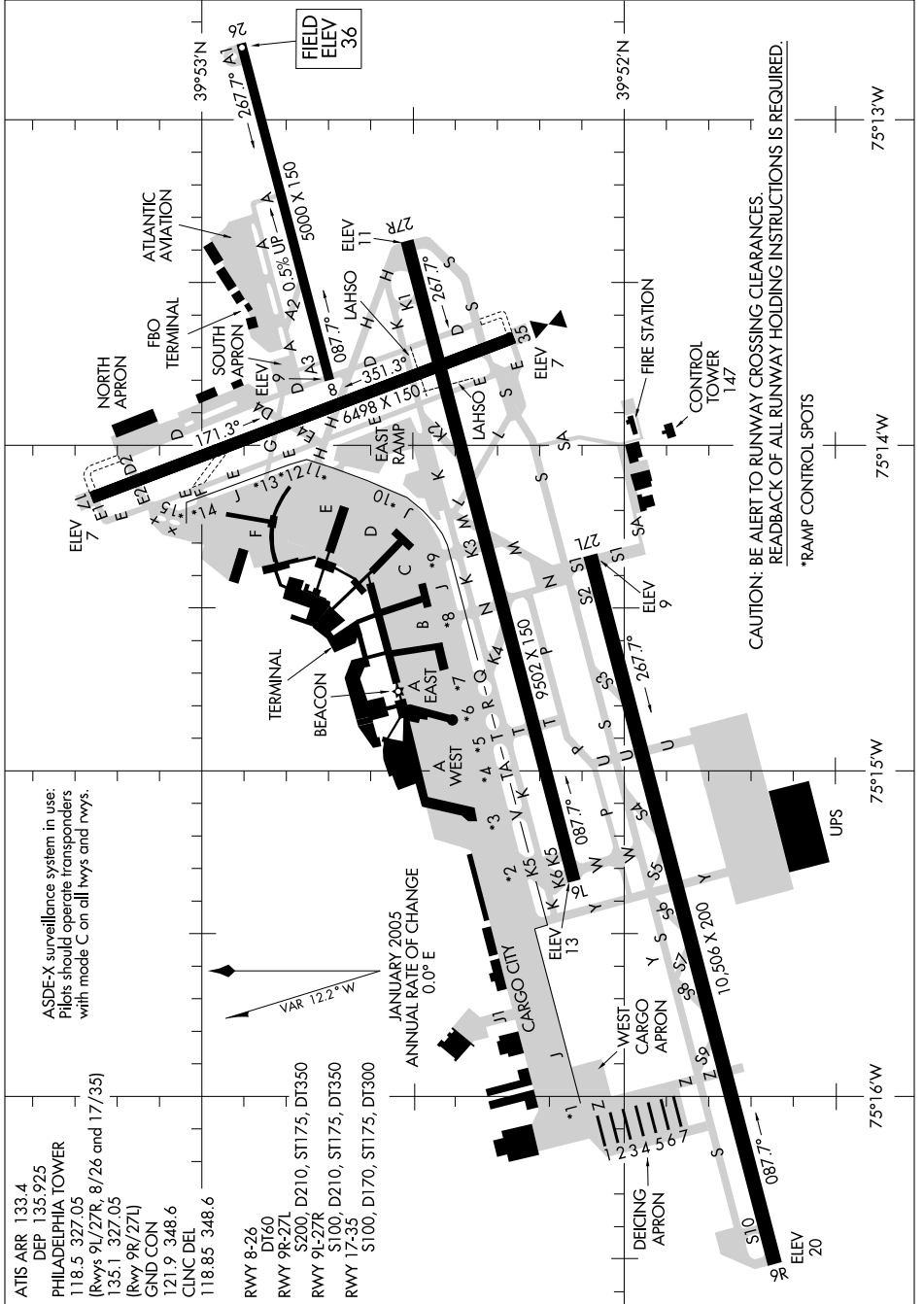


# AIRPORT DIAGRAM

AL-320 (FAA)

PHILADELPHIA INTL (PHL)  
PHILADELPHIA, PENNSYLVANIA

NE-4, 09 APR 2009 to 07 MAY 2009



CAUTION: BE ALERT TO RUNWAY CROSSING CLEARANCES.  
READBACK OF ALL RUNWAY HOLDING INSTRUCTIONS IS REQUIRED.

\*RAMP CONTROL SPOTS

ATIS ARR 133.4  
 DEP 135.925  
 PHILADELPHIA TOWER  
 118.5 327.05  
 (Rwys 9L/27R, 8/26 and 17/35)  
 135.1 327.05  
 (Rwys 9R/27L)  
 GND CON  
 121.9 348.6  
 CLNC DEL  
 118.85 348.6

RWY 8-26  
 DT60  
 RWY 9R-27L  
 S200, D210, ST1175, DT350  
 RWY 9L-27R  
 S100, D210, ST1175, DT350  
 RWY 17-35  
 S100, D170, ST1175, DT300

# AIRPORT DIAGRAM

PHILADELPHIA, PENNSYLVANIA  
PHILADELPHIA INTL (PHL)

NE-4, 09 APR 2009 to 07 MAY 2009