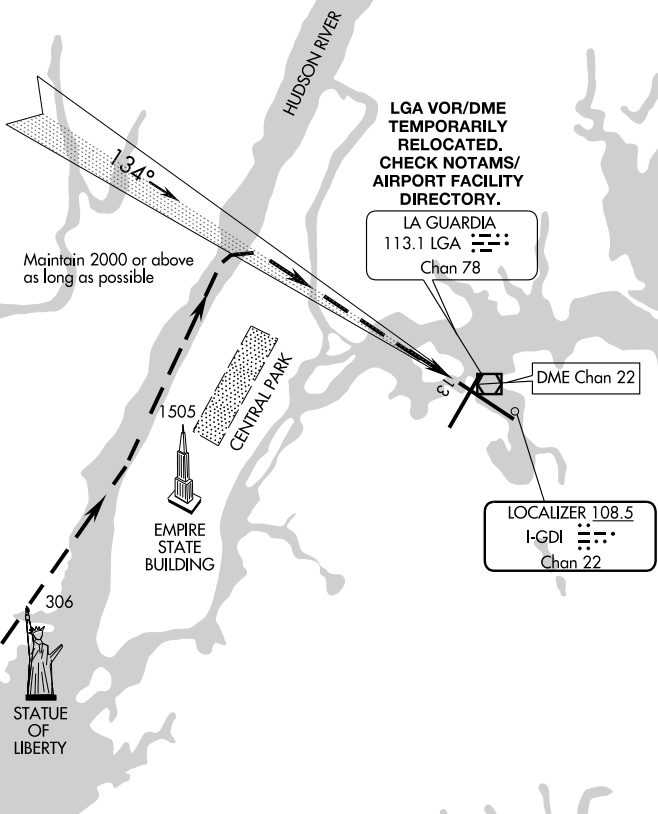


# RIVER VISUAL RWY 13

AL-289 (FAA)

NEW YORK/LA GUARDIA (LGA)  
NEW YORK, NEW YORK

ATIS ARR 125.95  
 ATIS 127.05  
 NEW YORK APP CON  
 120.8 263.0  
 LA GUARDIA TOWER  
 118.7 263.0  
 GND CON  
 121.7 263.0  
 CLNC DEL  
 135.2



Maintain 2000 or above as long as possible

**LGA VOR/DME  
 TEMPORARILY  
 RELOCATED.  
 CHECK NOTAMS/  
 AIRPORT FACILITY  
 DIRECTORY.**

LA GUARDIA  
 113.1 LGA  
 Chan 78

DME Chan 22

LOCALIZER 108.5  
 I-GDI  
 Chan 22

NE-2, 09 APR 2009 to 07 MAY 2009

NE-2, 09 APR 2009 to 07 MAY 2009

Vertical Guidance Navaid  
 and Angle:  
 VASI 3.0° TCH 48'

## RADAR REQUIRED

Weather minimums 3200 feet ceiling  
 and 5 mile visibility.

1 NM	2	3	4	5	6	7	8	9	10	11	12	13	14	15	16
------	---	---	---	---	---	---	---	---	----	----	----	----	----	----	----

### RIVER VISUAL RWY 13

When cleared for a RIVER VISUAL Rwy 13 approach, remain over the Hudson River until starting the turn to final approach north of Central Park. Expect 3500 feet until abeam Central Park (2500 feet when authorized by ATC).

# RIVER VISUAL RWY 13

40°47'N-73°52'W

NEW YORK, NEW YORK  
NEW YORK/LA GUARDIA (LGA)