

BOISE, IDAHO

AL-57 (FAA)

VORTAC BOI 113.3 Chan 80	APP CRS 098°	Rwy Idg TDZE 2833 Apt Elev 2868
---------------------------------------	------------------------	---

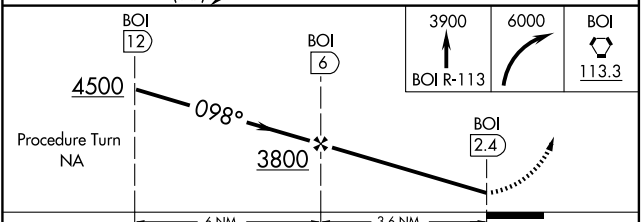
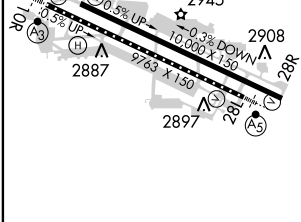
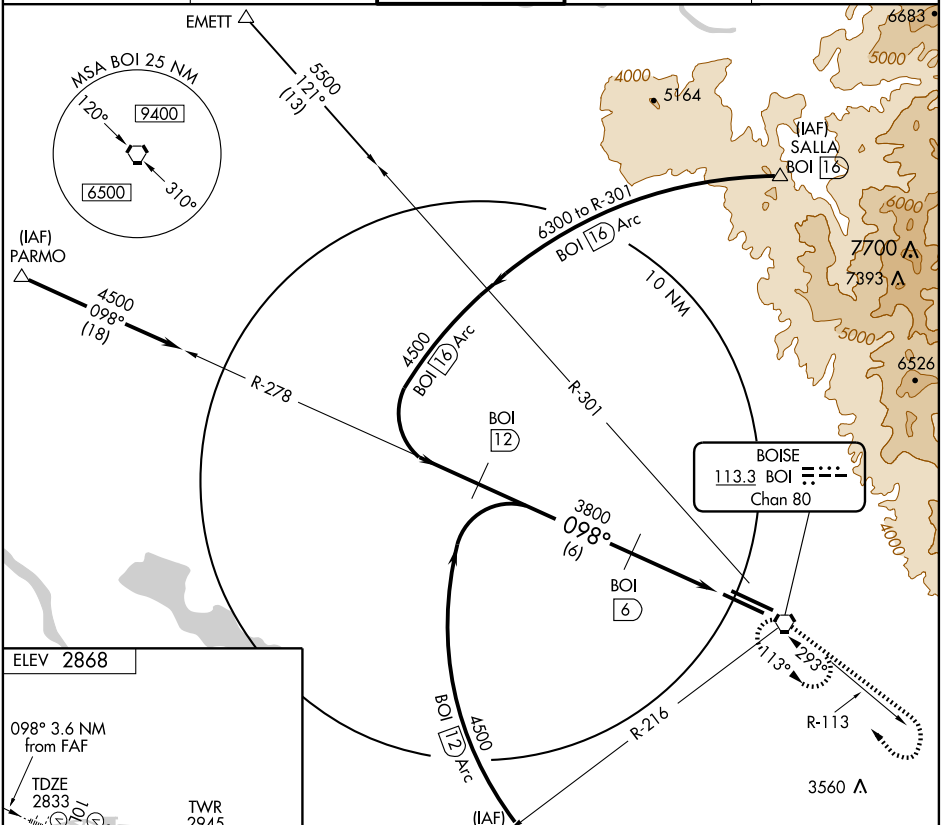
VOR/DME RWY 10R

BOISE AIR TERMINAL (GOWEN FIELD) (BOI)

▼ Inoperative table does not apply to Cat D.
Circling not authorized north of Rwy 10L-28R.

SSALR
MISSED APPROACH: Climb to 3900 via BOI R-113 within 6 NM, then climbing right turn to 6000 direct BOI VORTAC and hold.

ATIS 123.9 290.4	BOISE APP CON 119.6 269.4	BOISE TOWER 118.1 257.8	GND CON 121.7 348.6	CLNC DEL 125.9 323.2
----------------------------	-------------------------------------	-----------------------------------	-------------------------------	--------------------------------



CATEGORY	A	B	C	D
S-10R	3160/24 327 (400-1/2)			3160/50 327 (400-1)
CIRCLING	3300-1 432 (500-1)	3320-1 452 (500-1)	3320-1 1/2 452 (500-1 1/2)	3420-2 552 (600-2)

REIL Rwy 10L
TDZ/CL Rws 10R and 28L
HIRL Rws 10L-28R and 10R-28L

BOISE, IDAHO
Orig-A 09071

43°34'N-116°13'W

BOISE AIR TERMINAL (GOWEN FIELD) (BOI) VOR/DME RWY 10R

NW-1, 09 APR 2009 to 07 MAY 2009

NW-1, 09 APR 2009 to 07 MAY 2009