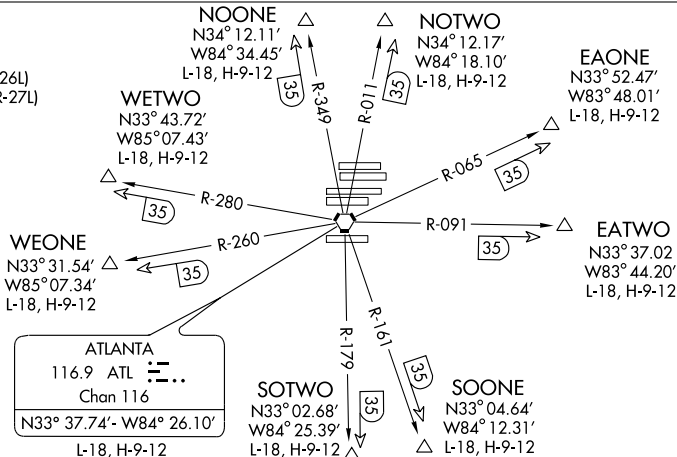


ATLANTA FIVE DEPARTURE (ATL5.ATL)

SL-26 (FAA)

ATLANTA, GEORGIA

ATIS DEP 125.55
 CLNC DEL 118.1
 GND CON
 121.9 381.6 (Rwys 8L-26R, 8R-26L)
 121.75 381.6 (Rwys 9L-27R, 9R-27L)
 121.65 381.6 (Rwy 10-28)
 ATLANTA TOWER
 119.1 381.6 (Rwy 8L-26R)
 125.325 381.6 (Rwy 8R-26L)
 119.3 381.6 (Rwy 9R-27L)
 123.85 381.6 (Rwy 9L-27R)
 119.5 381.6 (Rwy 10-28)
 ATLANTA DEP CON
 125.7 (Rwys 8L-26R, 8R-26L)
 135.7 (Rwys 9L-27R, 9R-27L)
 135.375 (Rwy 10-28)



NOTE: Chart not to scale.

TAKE-OFF MINIMUMS: RWY 8L, 8R, 9L, 9R, 26L, 26R, 27L, 27R, STANDARD.

NOTE: Monitor tower frequency when advised by ground control.

NOTE: Use departure frequency depicted unless otherwise assigned.

NOTE: **NOISE ABATEMENT DEPARTURE TRACKS (NADTs):** Following this procedure minimizes deviation from the idealized track. **TURBOJETTS ONLY:** Anticipate the following NADT no wind heading: RWY 8R heading 070°; RWY 9L heading 090°; RWY 26L heading 275°; RWY 27R heading 250°. ATC will issue a wind corrected heading prior to takeoff. Fly assigned heading at the point instructed by ATC.

NOTE: **TURBOJETTS:** Accelerate to 250 KIAS immediately until reaching 10,000 MSL, if unable, advise ATC.

TURBOPROPS: Operate in a manner that will result in best forward speed and climb rate.

DEPARTURE ROUTE DESCRIPTION

Turbojets maintain 10,000 (or requested altitude if lower), props maintain 4,000. Expect further clearance to filed altitude 10 minutes after departure. Maintain heading as assigned until vectored to appropriate VOR, airway, or jet route. Unless otherwise assigned, departure frequency for North runways (8L-26R and 8R-26L) - 125.7, South runways (9L-27R and 9R-27L) - 135.7. Transponder code will be issued via PDC or Atlanta Clearance Delivery.

SPECIAL INSTRUCTIONS: Midfield aircraft at ramps 1, 2, 3, 4, 5, and 6 will advise ramp towers of vector areas prior to pushback. The vector areas are associated with the depicted intersections as follows:

INTERSECTION	VECTOR AREA
EAONE	EAST-ONE
EATWO	EAST-TWO
NOONE	NORTH-ONE
NOTWO	NORTH-TWO
SOONE	SOUTH-ONE
SOTWO	SOUTH-TWO
WEONE	WEST-ONE
WETWO	WEST-TWO

Any aircraft receiving clearance via PDC may monitor Atlanta departure ATIS for departure runway.
 Upon receipt of ATC, clearance (from Atlanta Clearance Delivery), read back only your call sign and transponder code, unless you have a question.