

VOR or TACAN RWY 8

ALBUQUERQUE INTL SUNPORT (ABQ)

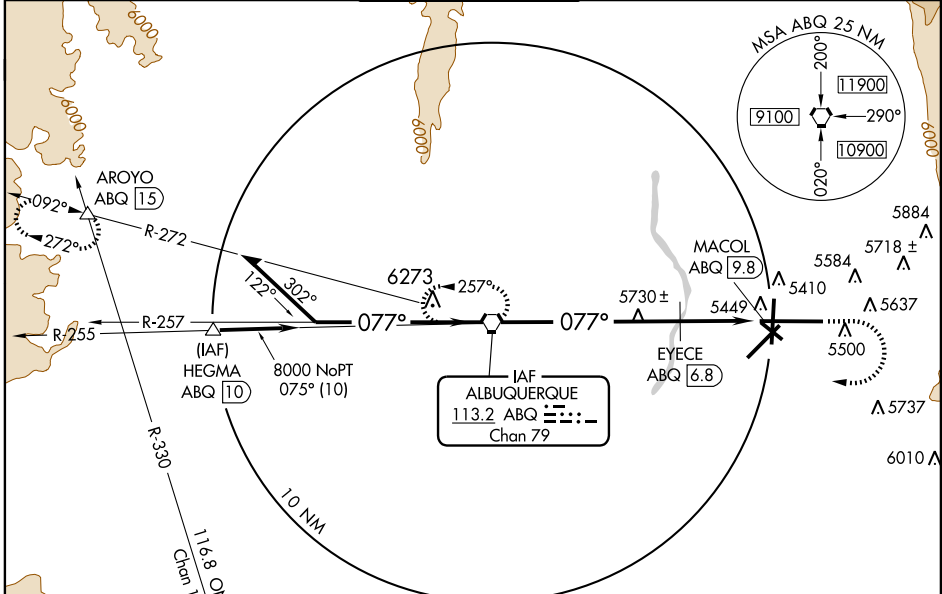
VORTAC ABQ 113.2 Chan 79	APP CRS 077°	Rwy Idg 12793 TDZE 5320 Apt Elev 5355
---------------------------------------	------------------------	--

⚠ For inoperative MALSR, increase S-8 Cat. A visibility to RVR 5000, and Cat. E visibility to 3 miles.
⚠ Circling NA for Cat. E east of Rwy 17/35.
⚠ EYECE FIX MINIMUMS: For inoperative MALSR, increase S-8 Cat. D visibility to RVR 6000, and Cat. E visibility to 3 miles.



MISSED APPROACH: Climb to 6200 then climbing right turn to 8000 direct ALBUQUERQUE VORTAC and hold (TACAN aircraft continue via ABQ R-272 to AROYO INT/ABQ 15 DME and hold W, RT, 092 inbound).

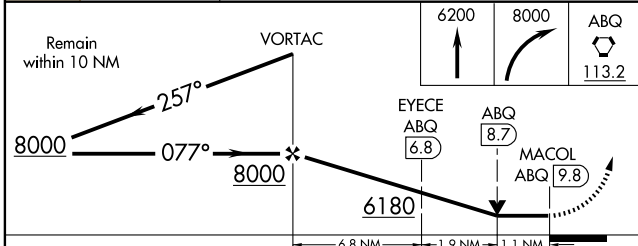
ATIS 118.0 257.7	ALBUQUERQUE APP CON 123.9 354.1	ALBUQUERQUE TOWER 120.3 351.9	GND CON 121.9 348.6	CLNC DEL 119.2 259.3
----------------------------	---	---	-------------------------------	--------------------------------



SW-1, 09 APR 2009 to 07 MAY 2009

SW-1, 09 APR 2009 to 07 MAY 2009

ELEV 5355	D
-----------	----------



077° 9.8 NM from FAF	5448	5532			
TDZE 5320	5320	5533			
6000 X 150	6000	5367			
13,793 X 150	13,793	5367			
0.5% DOWN					
TDZ/CL Rwy 3 and 8					
HIRL Rwy 3-21 and 8-26					
REIL Rwy 17, 26, 30 and 35					
MIRL Rwy 12-30 and 17-35					
FAF to MAP 9.8 NM					
Knots	60	90	120	150	180
Min:Sec	9:48	6:32	4:54	3:55	3:16

CATEGORY	A	B	C	D	E
S-8	6180/40	860 (900-3/4)	6180-2 860 (900-2)	6180-2 1/4 860 (900-2 1/4)	6180-2 1/2 860 (900-2 1/2)
CIRCLING	6180-1 825 (900-1)	6180-1 1/4 825 (900-1 1/4)	6180-2 1/2 825 (900-2 1/2)	6180-2 3/4 825 (900-2 3/4)	6180-3 825 (900-3)
EYECE FIX MINIMUMS					
S-8	5700/24 380 (400-1/2)		5700/50 380 (400-1)	6180-2 1/2 860 (900-2 1/2)	
CIRCLING	5840-1	485 (500-1)	5900-1 1/2 545 (600-1 1/2)	5920-2 565 (600-2)	6180-3 825 (900-3)