

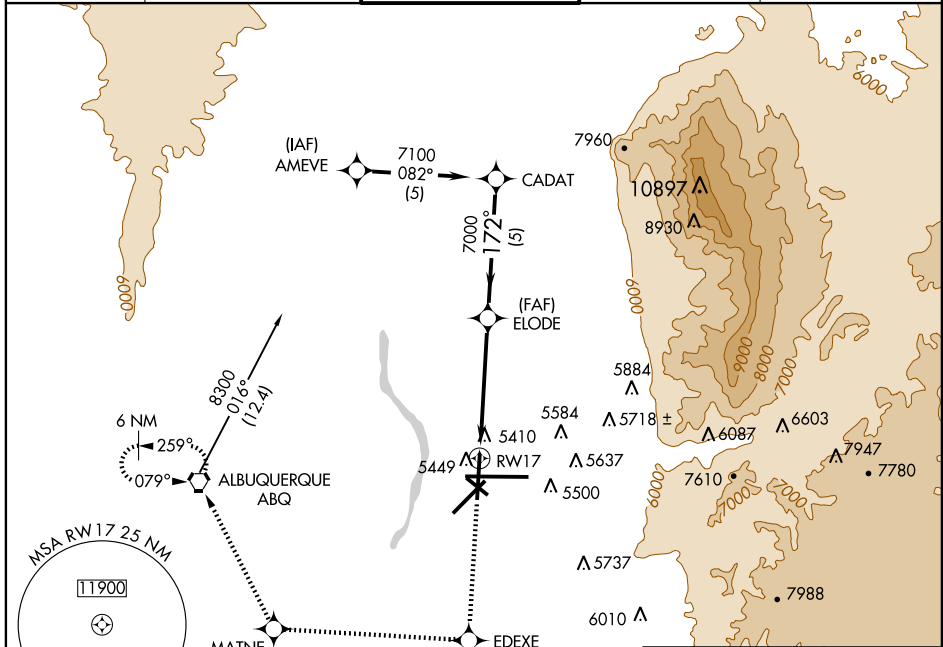
# RNAV (GPS) RWY 17

ALBUQUERQUE INTL SUNPORT (ABQ)

APP CRS <b>172°</b>	Rwy Idg TDZE Apt Elev	<b>9110</b> <b>5321</b> <b>5355</b>
------------------------	-----------------------------	---

Baro-VNAV NA below -25° C (-13° F)  
 MISSED APPROACH: Climb to 9000 via 172° course to EDEXE WP then via 262° course to MATNE WP then via 322° course to ABQ VORTAC and hold.

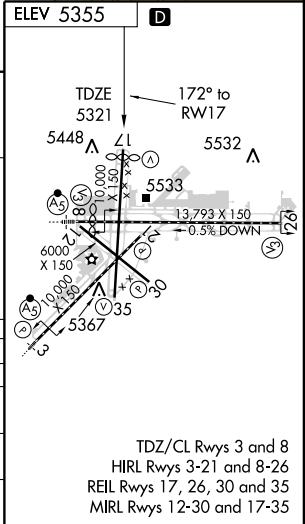
ATIS <b>118.0 257.7</b>	ALBUQUERQUE APP CON <b>123.9 354.1</b>	ALBUQUERQUE TOWER <b>120.3 351.9</b>	GND CON <b>121.9 348.6</b>	CLNC DEL <b>119.2 259.3</b>
----------------------------	---	---	-------------------------------	--------------------------------



SW-1, 09 APR 2009 to 07 MAY 2009

SW-1, 09 APR 2009 to 07 MAY 2009

Procedure Turn NA	CADAT	9000 ↑ 172°	EDEXE ↑ 262°	MATNE ↑ 322°	ABQ ↑ 322°
GS 3.00° TCH 53	7100	172°	7000	*1.3 NM to RWY 17	RWY 17
	5 NM		3.7 NM	1.3 NM	
CATEGORY	A	B	C	D	
GLS DA	NA				
LNAV/VNAV DA	5700-1¼ 379 (400-1¼)				
LNAV MDA	5780-1	459 (500-1)	5780-1¼ 459 (500-1¼)	5780-1½ 459 (500-1½)	
CIRCLING	5840-1¼	485 (500-1¼)	5900-1½ 545 (600-1½)	5940-2 585 (600-2)	



TDZ/CL Rwy 3 and 8  
 HIRL Rwy 3-21 and 8-26  
 REIL Rwy 17, 26, 30 and 35  
 MIRL Rwy 12-30 and 17-35