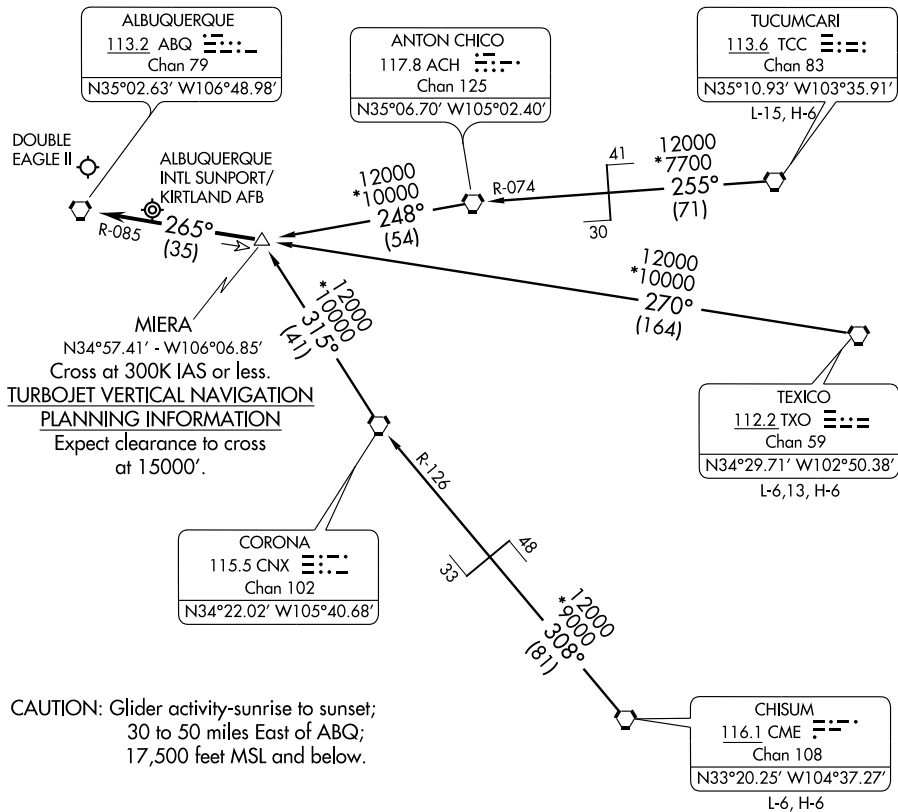


# MIERA TWO ARRIVAL

ST-12 (FAA)

ALBUQUERQUE, NEW MEXICO

ALBUQUERQUE APP CON  
123.9 354.1  
ATIS  
118.0 257.7



SW-1, 09 APR 2009 to 07 MAY 2009

SW-1, 09 APR 2009 to 07 MAY 2009

**CHISUM TRANSITION (CME.MIERA2):** From over CME VORTAC via CME R-308 and CNX R-126 to CNX VORTAC, then via CNX R-315 to MIERA DME fix. Thence....

**TEXICO TRANSITION (TXO.MIERA2):** From over TXO VORTAC via TXO R-270 and ABQ R-085 to MIERA DME fix. Thence....

**TUCUMCARI TRANSITION (TCC.MIERA2):** From over TCC VORTAC via TCC R-255 and ACH R-074 to ACH VORTAC, then via ACH R-248 to MIERA DME fix. Thence....

....From over MIERA DME fix via ABQ R-085 to ABQ VORTAC. Expect vectors to final approach course after passing MIERA DME fix.

# MIERA TWO ARRIVAL

ALBUQUERQUE, NEW MEXICO