

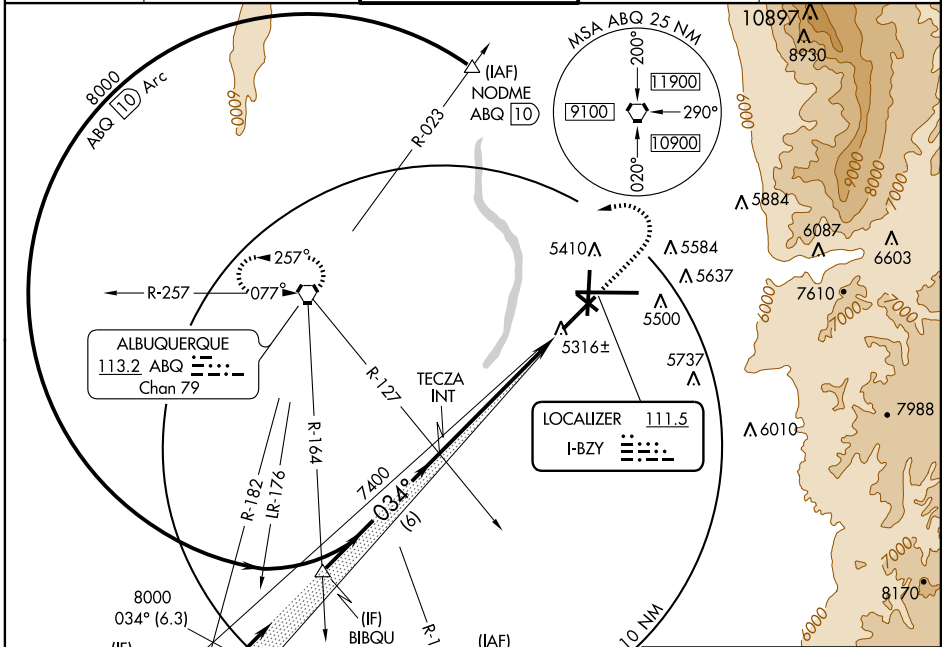
ILS or LOC RWY 3

ALBUQUERQUE INTL SUNPORT (ABQ)

LOC I-BZY 111.5	APP CRS 034°	Rwy ldg 10000
		TDZE 5312
		Apt Elev 5355

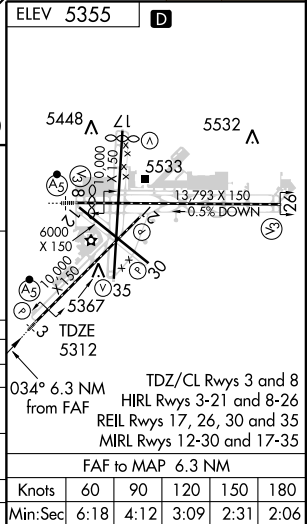
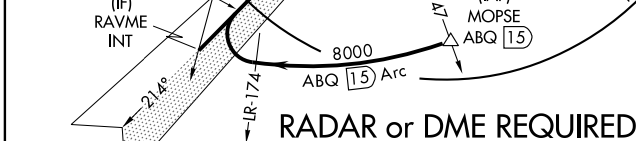
<p>▼ For inoperative MALSR, increase S-LOC 3 Cat D visibility to RVR 5000.</p> <p>ASR Use of flight director or autopilot or heads up display guidance system (HGS) required.</p>	<p>MALSR</p>	<p>MISSED APPROACH: Climb to 5900 then climbing left turn to 8000 direct ABQ VORTAC and hold, continue climb in hold to 8000.</p>
---	--------------	---

ATIS 118.0 257.7	ALBUQUERQUE APP CON 123.9 354.1	ALBUQUERQUE TOWER 120.3 351.9	GND CON 121.9 348.6	CLNC DEL 119.2 259.3
----------------------------	---	---	-------------------------------	--------------------------------



SW-1, 09 APR 2009 to 07 MAY 2009

SW-1, 09 APR 2009 to 07 MAY 2009



BIBQU INT	TECZA INT	5900	8000	ABQ
8000	7400			113.2
GS 3.00°				
TCH 60				
	6 NM	6.3 NM		

CATEGORY	A	B	C	D
S-ILS 3	5512/24 200 (200-½)			
S-LOC 3	5600/24 288 (300-½)		5600/40 288 (300-¾)	
CIRCLING	5840-1 485 (500-1)		5900-1½ 545 (600-1½)	5920-2 565 (600-2)
SPECIAL AIRCREW AND AIRCRAFT CERTIFICATION REQUIRED				
S-ILS 3	5512/18 200 (200-½)			

Knots	60	90	120	150	180
Min:Sec	6:18	4:12	3:09	2:31	2:06